



US00D677946S

(12) **United States Design Patent**
Duvigneau

(10) **Patent No.:** **US D677,946 S**

(45) **Date of Patent:** **** Mar. 19, 2013**

(54) **PATTERN FOR A CHAIR**

(75) Inventor: **Nikolai Duvigneau, Zichron Yaacov (IL)**

(73) Assignee: **Curver Luxembourg SARL,**
Neidercorn (LU)

(**) Term: **14 Years**

(21) Appl. No.: **29/389,254**

(22) Filed: **Apr. 8, 2011**

(30) **Foreign Application Priority Data**

Oct. 18, 2010 (IL) 50171

(51) **LOC (9) Cl.** **06-01**

(52) **U.S. Cl.** **D6/500**

(58) **Field of Classification Search** D6/500-502,
D6/587, 595-598, 613, 616-619, 603-606;
D5/47-54, 1-3, 23, 29, 11-12, 19, 56; 428/17-18,
428/151, 154, 156, 171, 187, 198-199, 542.2,
428/542.6

See application file for complete search history.

(56) **References Cited**

U.S. PATENT DOCUMENTS

1,637,410	A *	8/1927	Coryell	52/446
2,977,265	A *	3/1961	Forsberg et al.	428/116
3,059,668	A	10/1962	Greenspan		
4,231,834	A	11/1980	Trejo Gonzalez		
D360,531	S *	7/1995	Griffith	D5/1
5,549,958	A	8/1996	Royaerts		
5,985,188	A	11/1999	Jennings et al.		
6,161,353	A *	12/2000	Negola et al.	52/453
D476,161	S *	6/2003	Salway et al.	D5/47
D478,217	S *	8/2003	Bruner et al.	D5/47
D556,478	S *	12/2007	Bryant et al.	D6/500
D589,263	S *	3/2009	Wang	D5/47
D613,072	S *	4/2010	Raferly et al.	D5/47
D623,316	S *	9/2010	Moore	D25/138
D646,068	S *	10/2011	Bogdan et al.	D6/369

D648,544	S *	11/2011	Diventi et al.	D5/47
8,141,595	B2 *	3/2012	Quigley	139/383 A
2010/0276980	A1 *	11/2010	Tseng	297/452.64

FOREIGN PATENT DOCUMENTS

CN	2566701	Y	8/2003
DE	1 954 764	A1	5/1970
EP	0 796 577	A1	9/1997
EP	701461-0009		5/2007
EP	701461-0010		5/2007
GB	2 257 352	A	1/1993
WO	02/067727	A1	9/2002

OTHER PUBLICATIONS

The International Search Report for International Application No. PCT/IL2009/000369, completed on Aug. 20, 2009, mailed on Oct. 28, 2009; three pages total.

The Office Action issued Oct. 20, 2010, concerning European Application No. 09 754 322.7; five pages total.

Tokuji Yoshioka: "AMI AMI chair" Milan Design Week 2008 Preview, [Online] Apr. 10, 2008 (Apr. 10, 2008), XP002542166 Retrieved from the Internet: URL: <http://www.dezain.net/en/thread/12198/> [retrieved on Aug. 21, 2009].

(Continued)

Primary Examiner — Kelley Donnelly

(74) *Attorney, Agent, or Firm* — Nath, Goldberg & Meyer; Jerald L. Meyer

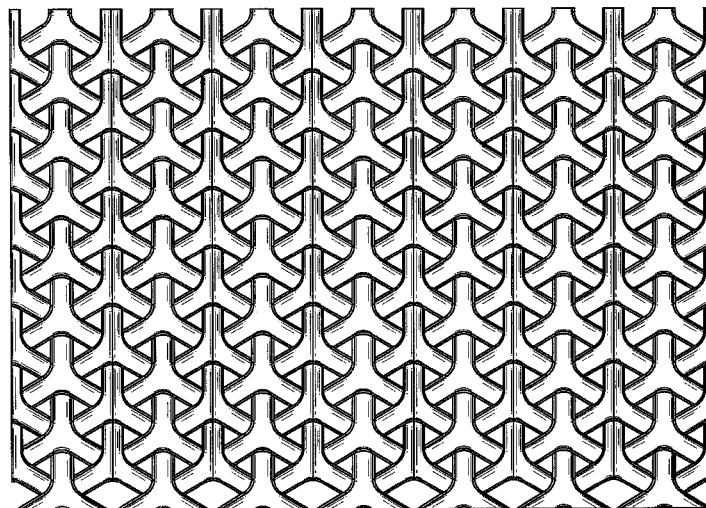
(57) **CLAIM**

The ornamental design for a pattern for a chair, as shown and described.

DESCRIPTION

FIG. 1 is a front view of a design for a pattern for a chair; FIG. 2 is a top view of a design for a pattern for a chair; FIG. 3 is a bottom view of a design for a pattern for a chair; FIG. 4 is a perspective view of a design for a pattern for a chair; and, FIG. 5 is an enlarged view from the perspective view a rattan design for a pattern for a chair.

1 Claim, 5 Drawing Sheets



OTHER PUBLICATIONS

Tokujin Yoshioka: "AMI AMI chair" Kartell Technical Sheet, [Online] Apr. 16, 2008 (Apr. 16, 2008), XP002542167 Retrieved from the Internet: URL:<http://www.kartell.it/>> [retrieved on Aug. 21, 2009].

Enclosure A Invoice n. F/197 dated on Sep. 9, 2004 issued by Arplast S.n. c. to Mafiplast S.r.L. And related to black, red and white chair seats shown in photograph attached to said invoice; four pages total.
Enclosure B Front page and pp. 4 and 6 of IPAE-Progarden catalogue dated 2007; 3 pages total.

Enclosure C Invoice n. 1728i dated on Dec. 4, 2007 issued by Ipaepro-garden S.p.A. to Plasticos Santi S.L. related to chairs named Capri shown on catalogue of enclosure B; 1 page total.

Enclosure D Invoice n. 2032 dated on May 16, 2007 issued by Ipaepro-garden S.p.A. to Castorama Savignano related to chairs named Capri shown on catalogue of enclosure B; 2 pages total.

Enclosure E Front page and p. 3 of Ipaepro-garden catalogue dated 1997; 2 pages total.

Enclosure F Invoice n. 2980 dated on Jul. 24, 2007 issued by Ipaepro-garden S.p.A. to Ilsa International S.r.L. related to chairs named Camelia; 1 page total.

Enclosure G Front page and p. 10 of Ipaepro-garden catalogue dated 2004; 2 pages total.

Enclosure H Photographs showing a section of detail of the chair seats of Enclosure A; 2004; 1 page total.

Enclosure I Photographs showing a section detail of the chairs named Capri; 2007; 1 page total.

Enclosure L Photographs showing a section detail of the chairs named Camelia; 1997; 1 pages total.

* cited by examiner

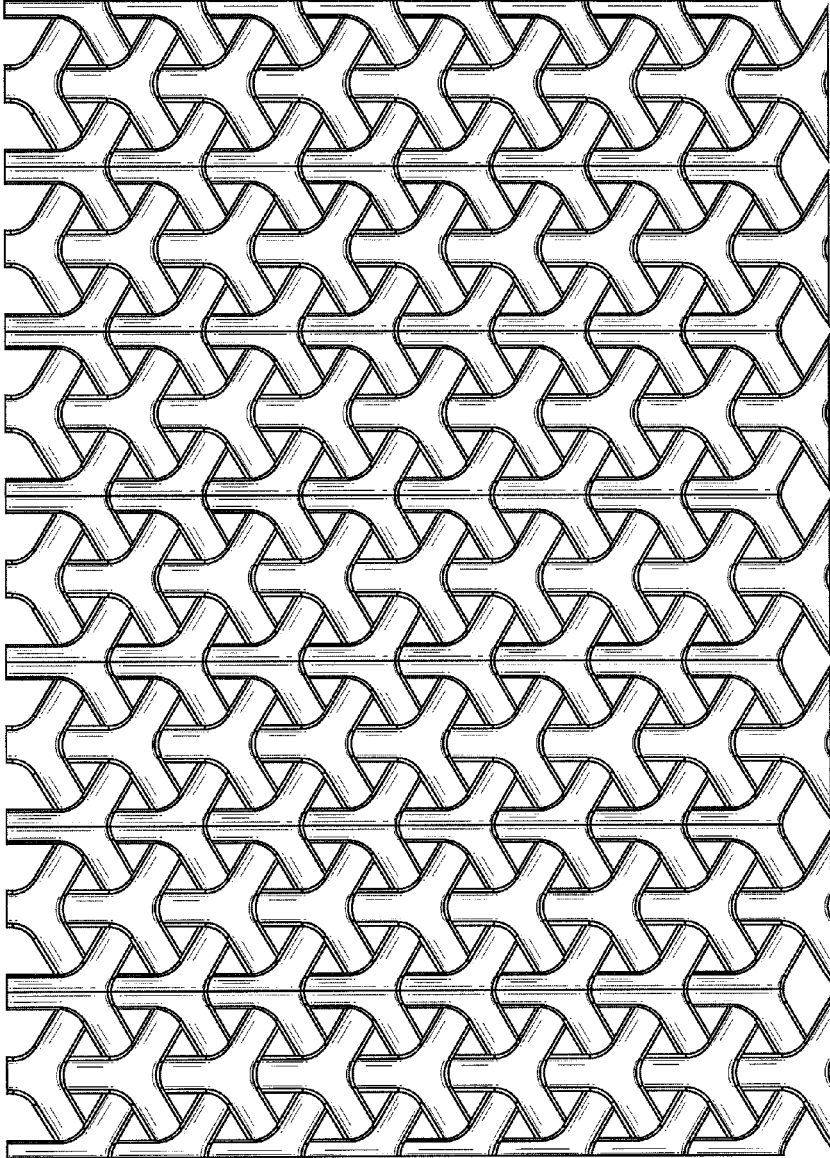


FIG. 1



FIG. 2



FIG. 3

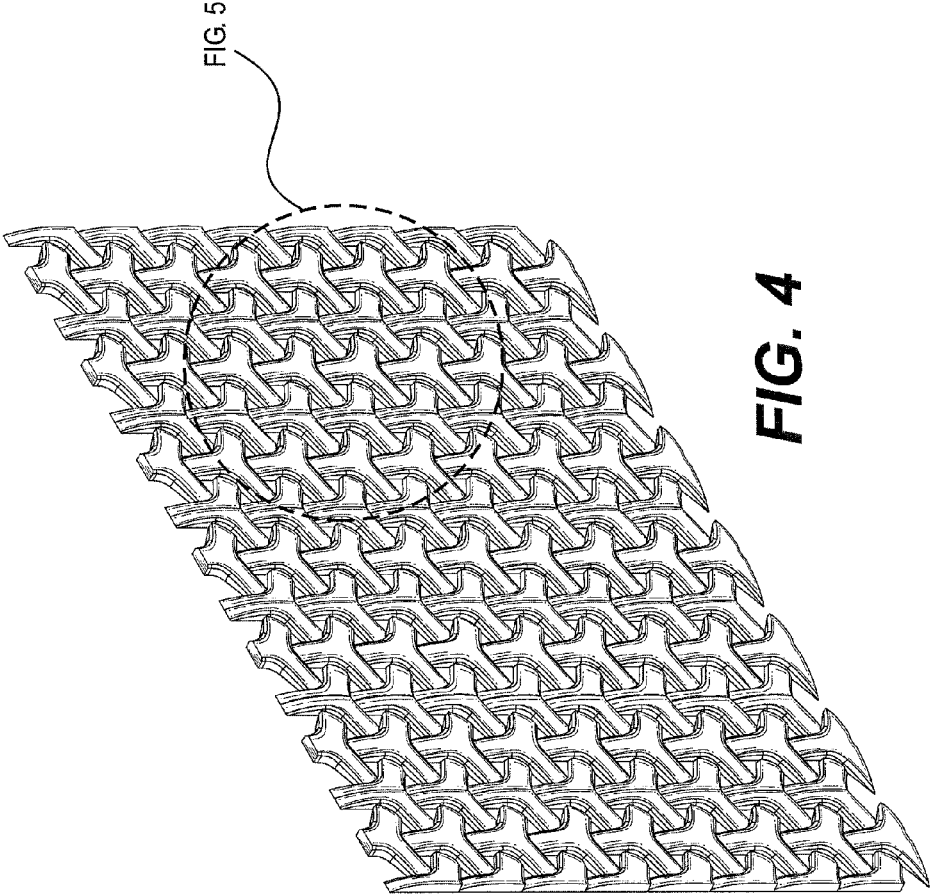


FIG. 4

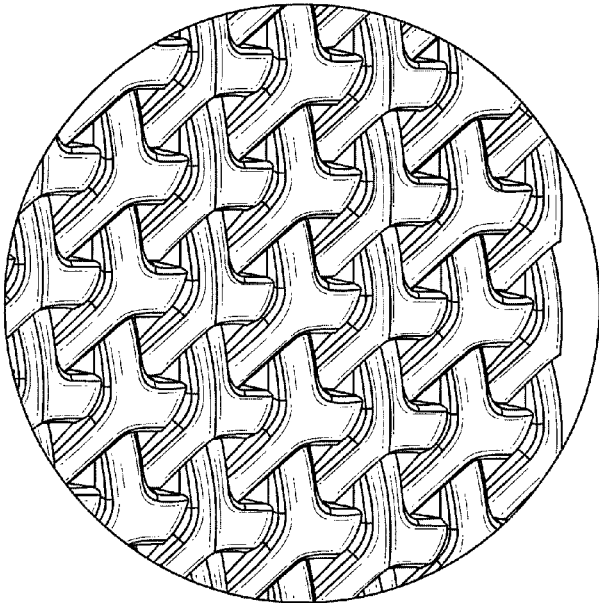


FIG. 5